

Configuration Card

Terminals:



Standard Terminals:

terminal 03 or 93 *	terminal 04 or 94 *	terminal 00 ^{*1}	terminal 42 ^{*1}
terminal 28 ^{*1}	terminal 05	terminal 23	terminal 24

* terminal 03/04 = brass; terminal 93/94 = steel

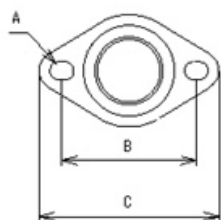
Special Terminals:

terminal 09 (45°)	terminal 59 (30°)	terminal 61 ^{*1}	terminal 63



→ further special terminals available on request

^{*1} For this terminal there is a restriction on its maximum ambient temperature as well as for the maximum current.




Mountings:



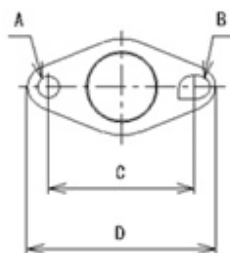
Moveable Standard Brackets:





	
bracket 3 (material thickness 0,25mm)	bracket 4 (material thickness 0,25mm)
A 3.2×3.7	A 3.2×3.7
B 24.5	B 24.5
C 31	C 31

Moveable Special Brackets:

		
bracket 1 (material thickness 0,5mm)	bracket 2 (material thickness 0,5mm)	bracket 8 (material thickness 0,5mm)
A 3.2×4.2	A 4.2×5.8	A 4.2×8.4
B 24	B 33.4	B 30.8
C 32	C 44	C 44

Fixed Standard Brackets:








			
bracket B with cap A Steel	bracket H with cap W Steel / Aluminium	bracket B with cap Y Steel	bracket 5 with cap 1 Aluminium
A 3.2×4.2	A 3.2×4.2	A 3.2×4.2	A 3.2×4.2
B ϕ 3.7	B ϕ 3.6	B ϕ 3.7	B 3.2×4.2
C 24	C 24	C 24	C 24
D 32	D 32	D 32	D 32

Pipe Mounting:

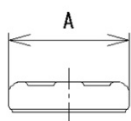


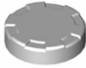

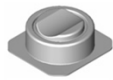
2/8 up to 7/8 inch

				
pipe clip M (2/8 inch) $\phi=6,35\text{mm}$	pipe clip J (3/8 inch) $\phi=9,525\text{mm}$	pipe clip E (4/8 inch) $\phi=12,7\text{mm}$	pipe clip K (5/8 inch) $\phi=15,875\text{mm}$	pipe clip L (6/8 inch) $\phi=19,05\text{mm}$

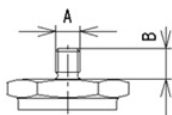
Caps:

Standard Caps:



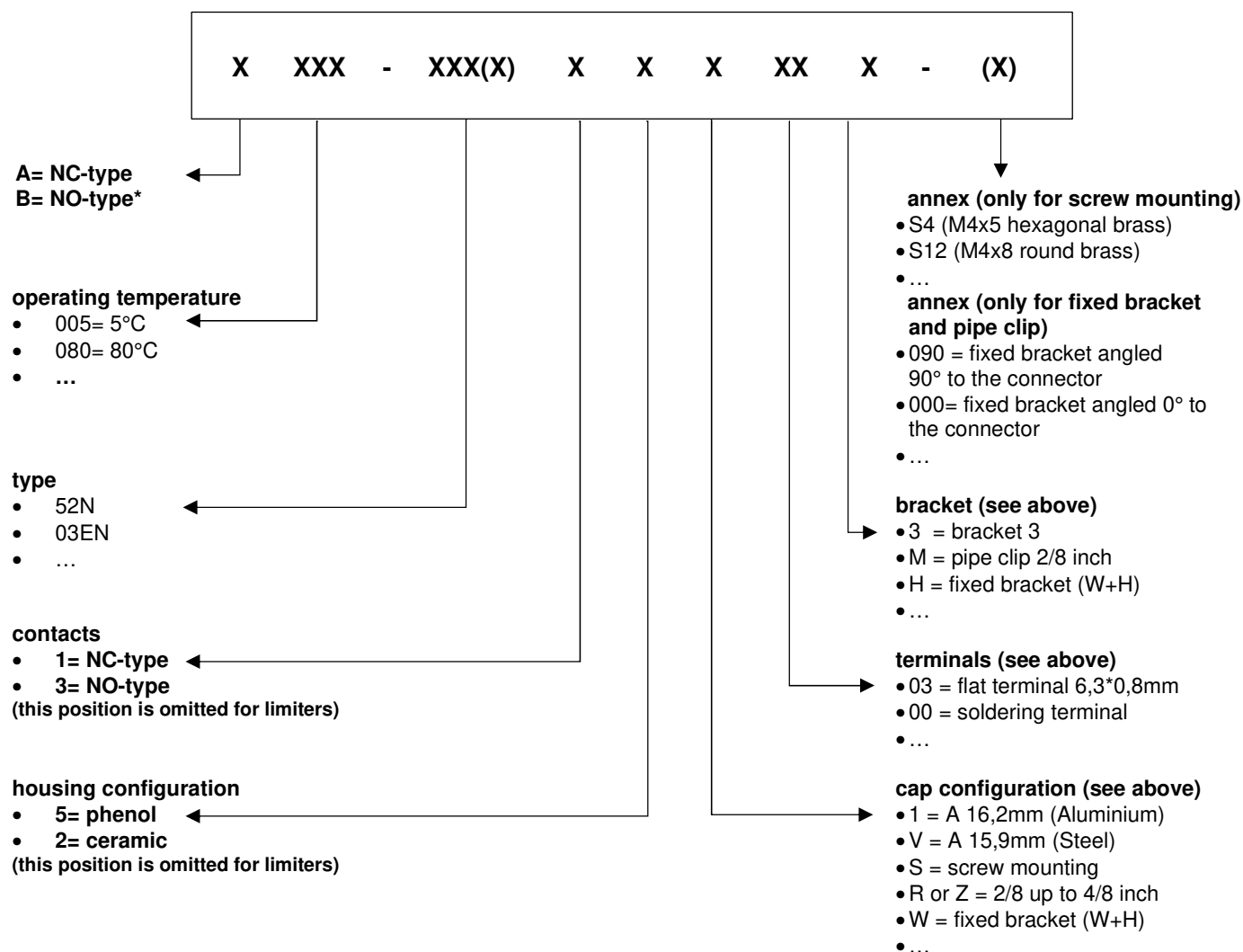
		
cap 1 1 = A 16,2 mm (Aluminium)	cap T and V T = A 16,2 mm (Aluminium) V = 15,9 mm (Steel)	cap R4, Z4, R6, Z6 und R7 R4+Z4 for 2/8, 3/8 and 4/8 inch (Steel + Copper) R6+Z6 for 5/8 and 6/8 inch (Steel + Copper) R7 for 7/8 inch (Copper)

Screw Mounting:



					
S4 M4x5 (hexagonal) Brass	S5 M5x6 (hexagonal) Brass	S6 M5x8 (hexagonal) Brass	S11 M5x6 (round) Brass	S12 M4x8 (round) Brass	S18 M4x5 (round) Brass

Structure of the Article Number



* NO-type is not available as limiters and fuses.

For the model range 23EN as well as 23EP the configuration card is valid on a limited basis.

The shown configurations don't fit?

We would like to check in dialogue with you, if there is a suitable solution for your application.

Our friendly team will give you detailed information to all our products. Of course, we want to advise you, to find the best solution for your application. Please call us for further information.

Protherm Wärmeschutz GmbH
Turnstraße 28
D-75328 Schömburg

Phone: +49 (0) 7235 980 200
Fax: +49 (0) 7235 980 201
E-mail: kontakt@protherm.info
Internet: www.protherm.info